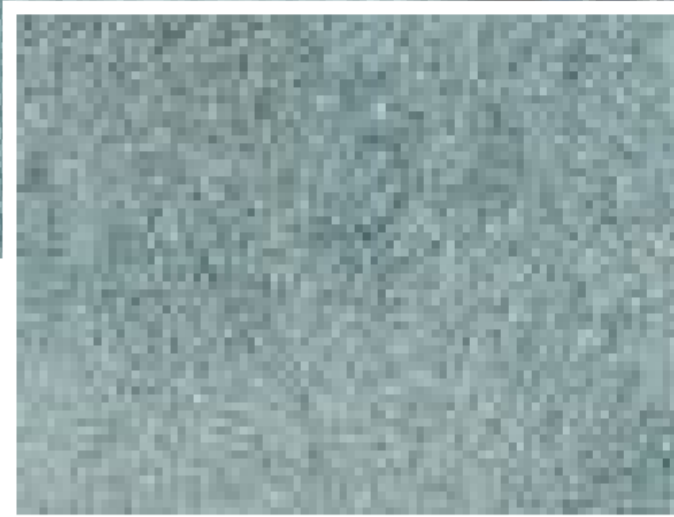




3151 RED



3121 BEIGE



3111 LIGHT BLUE



3112 DARK BLUE



3122 BISCUIT



3123 CHOCOLATE



3141 SILVER

Technical Specifications:

Manufacturing Process:
TUFTED

Gauge:
5/32

Total Height:
15 mm

Pile Weight:
2200gsm

Total Weight:
2830 gsm

Backing:
ACTION

Yarn/ Fibre:
100% PES

Width:
4 m

Pile Height:
13 mm

Construction:
CUT PILE

[View in Studio](#)