

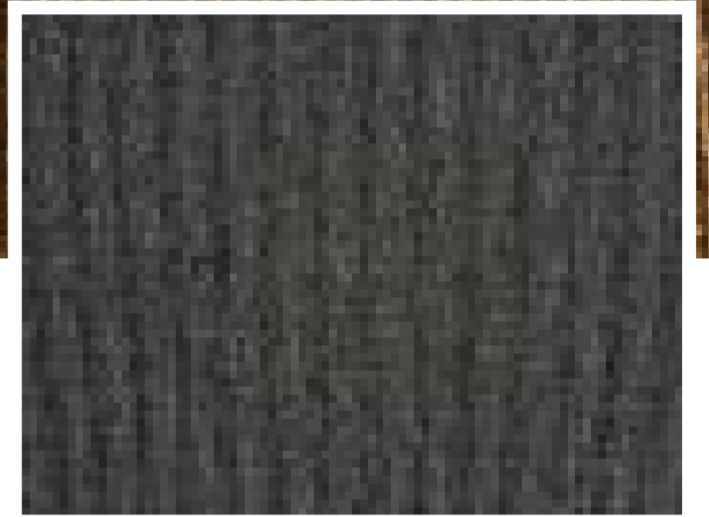
311 BLUE



321 DARK BROWN



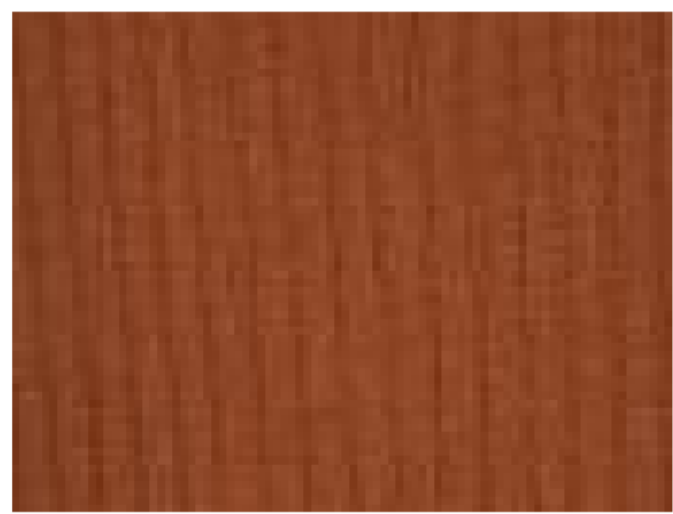
329 LGHT BROWN



341 GREY



351 RED



359 ORANGE

Technical Specifications:

Manufacturing Process:
TUFTED

Total Height:
5 mm

Pile Weight:
400 gsm

Backing:
FELT

Yarn/ Fibre:
100% PP

Width:
13.2 ft

Construction:
LOOP PILE

[View in Studio](#)