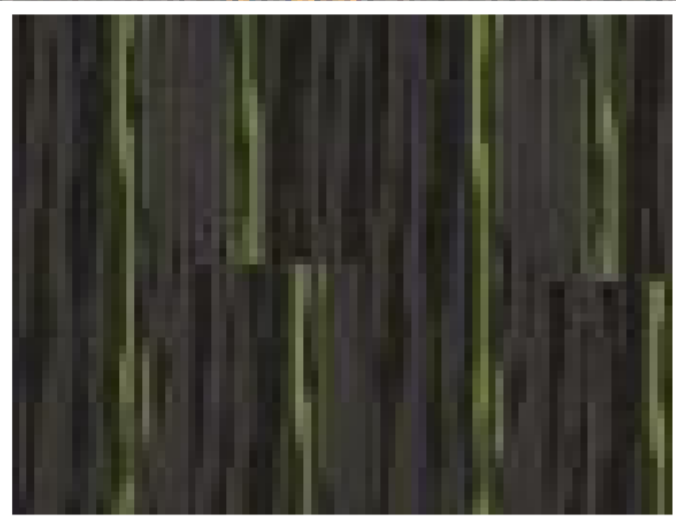
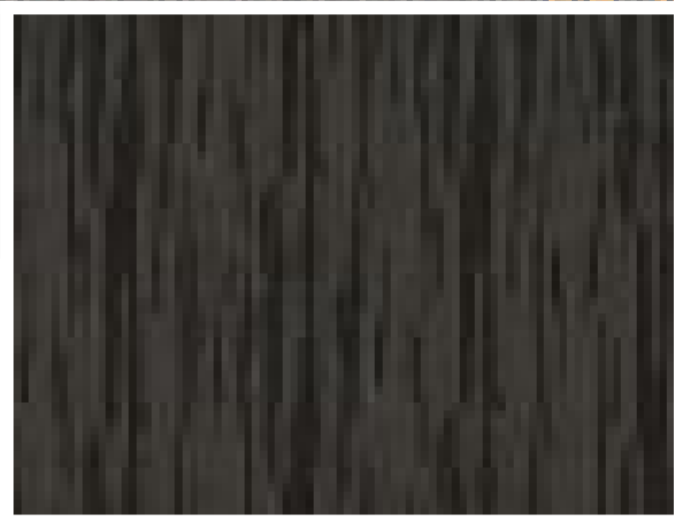


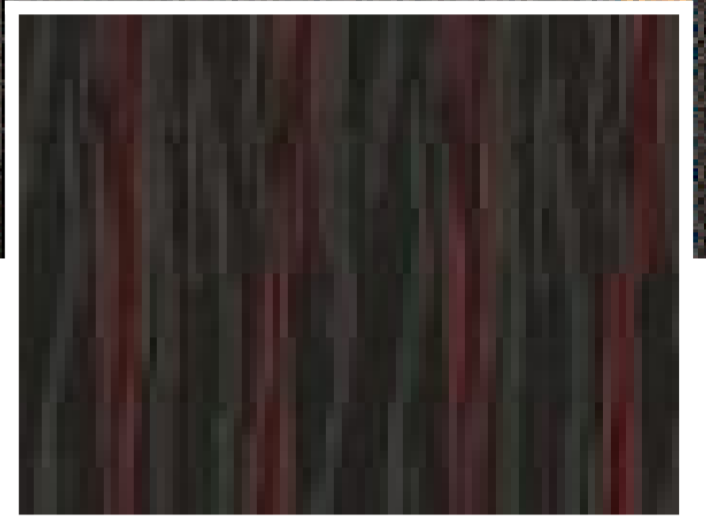
4911 BLUE



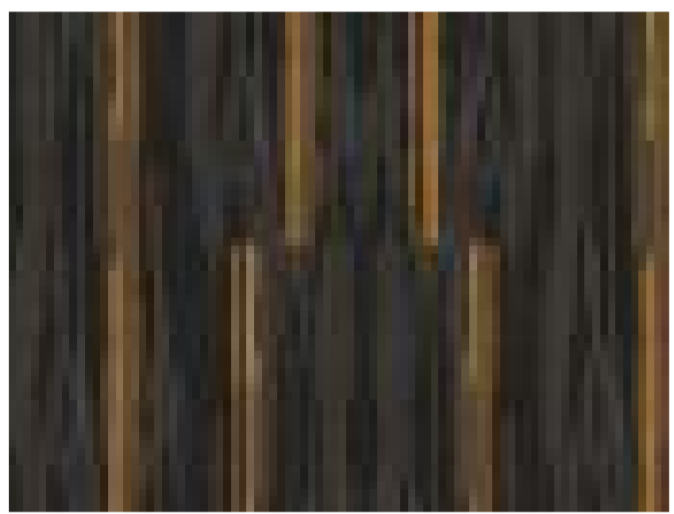
4931 GREEN



4948 DARK GRAY



4951 RED



4966 ORANGE

Technical Specifications:

Manufacturing Process:
TUFTED

Gauge:
1/12

Total Height:
5 MM

Pile Weight:
500 GSM

Backing:
PVC

Yarn/ Fibre:
POLYPROPYLENE

Plank / Tile Size:
25CM X 100CM

Pile Height:
5 MM

Construction:
MULTI LEVEL LOOP PILE

[View in Studio](#)