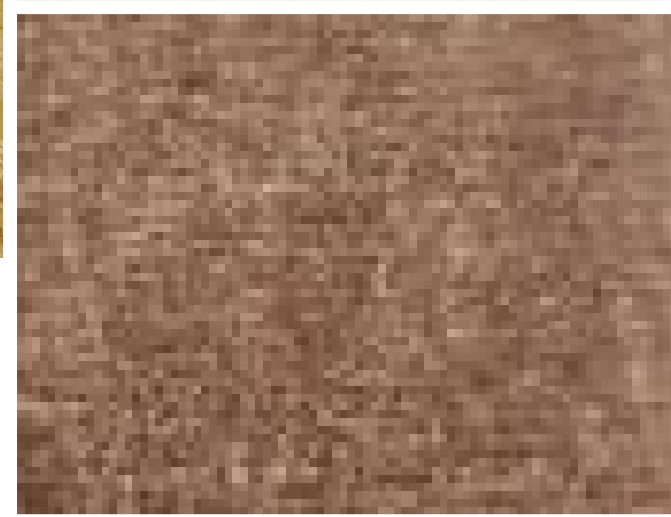




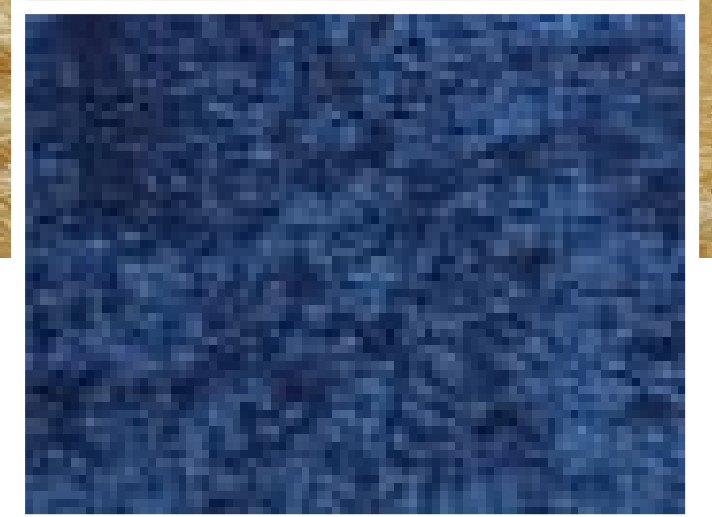
**5554 RED**



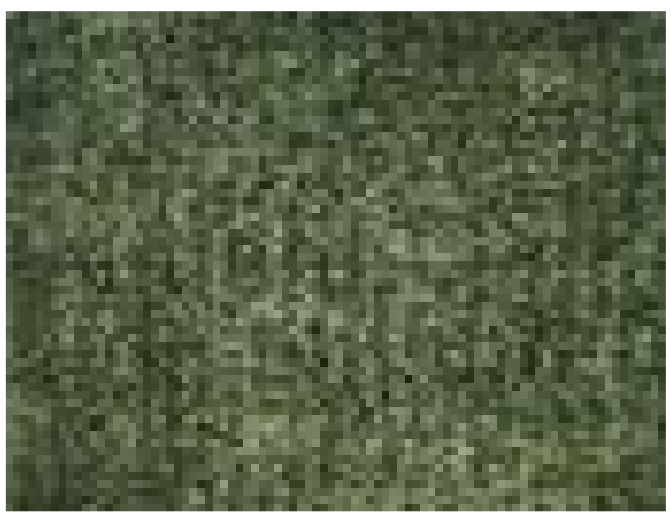
**5555 MAROON**



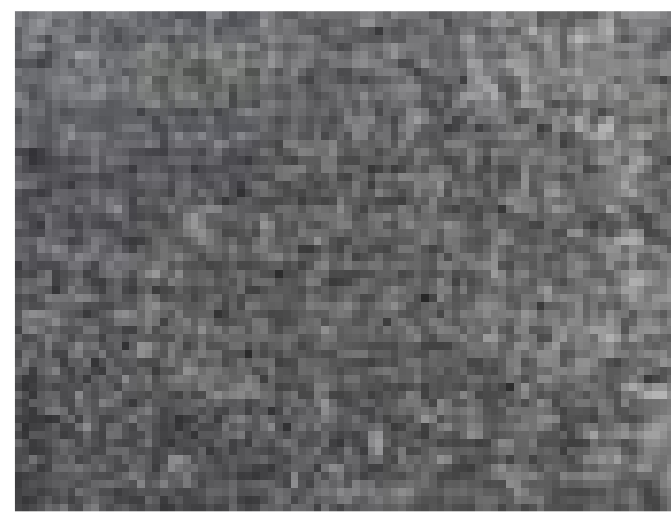
**5567 RUST**



**5513 BLUE**



**5531 GREEN**



**5542 GRAY**



**5553 PINK**



**5554 RED**



**5555 MAROON**



**5567 PEACH**



**5571 GOLD**

**Technical Specifications:**

Manufacturing Process:  
**TUFTED**

Gauge:  
**1/8TH**

Pile Weight:  
**750GSM**

Total Weight:  
**1750**

Backing:  
**ACTION**

Yarn/ Fibre:  
**PP HEATSET 2 PLY**

Width:  
**4M**

Pile Height:  
**8MM**

Construction:  
**CUT PILE**

Roll Size:  
**30M**

[View in Studio](#)