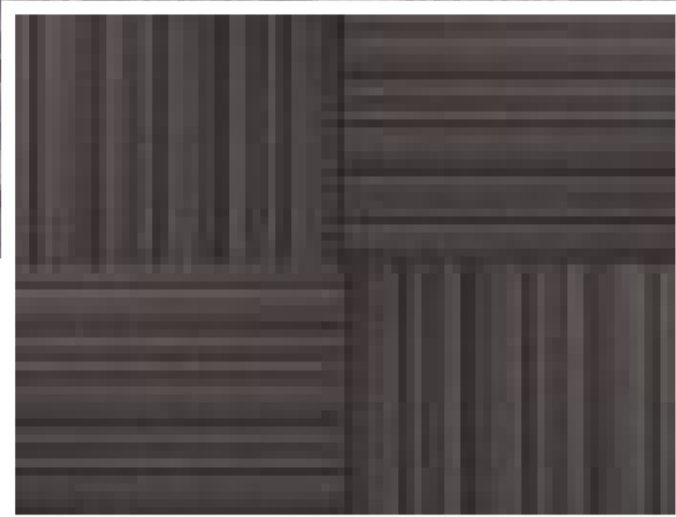
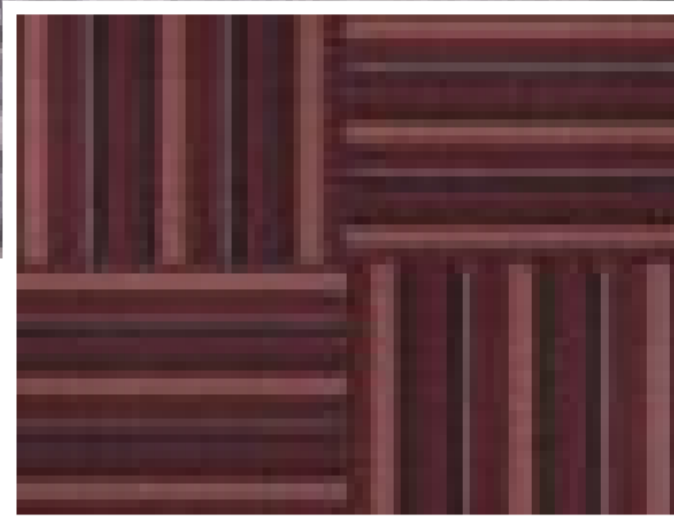


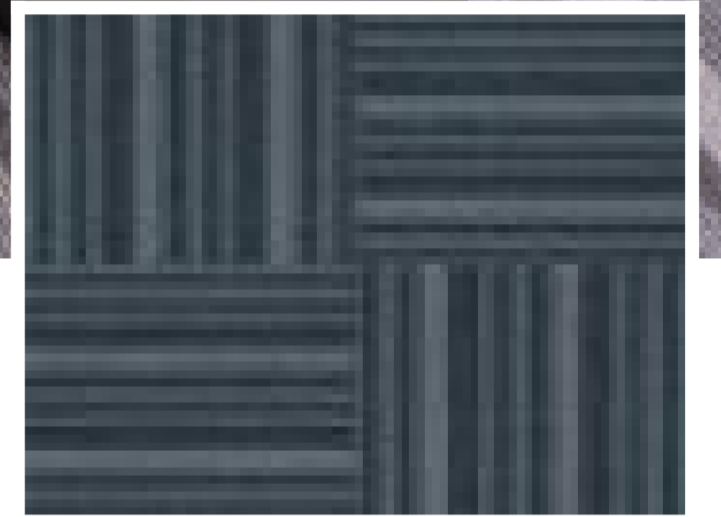
RI 31 BLUE



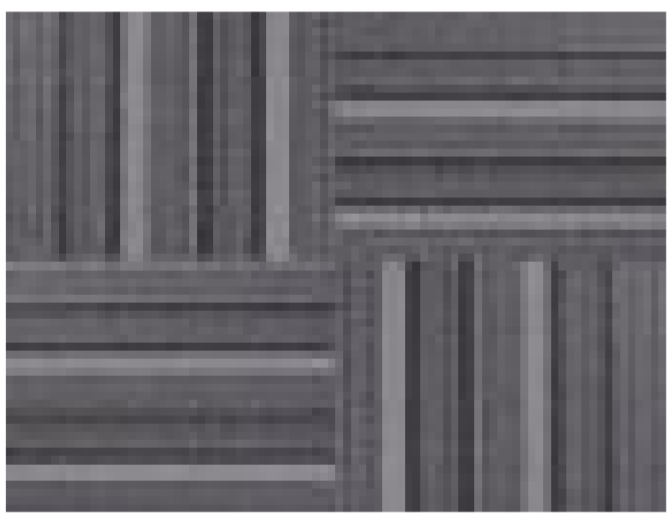
RI 32 BLACK



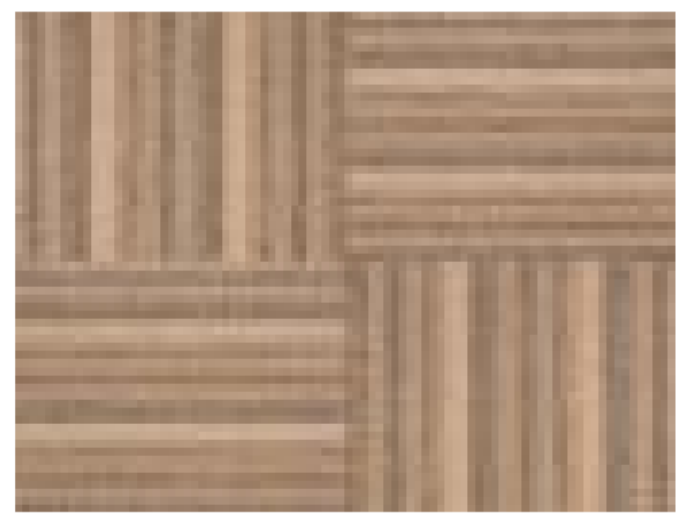
RI 33 RED



RI 34 GREEN



RI 35 GRAY



RI 36 BEIGE



RI 37 BROWN

Technical Specifications:

Manufacturing Process:
TUFTED

Total Height:
7 mm

Pile Weight:
580 gsm

Backing:
PVC (reinforced with glass fiber)

Yarn/ Fibre:
100% PP

Plank / Tile Size:
50cm x 50cm

Construction:
LOOP PILE

[View in Studio](#)